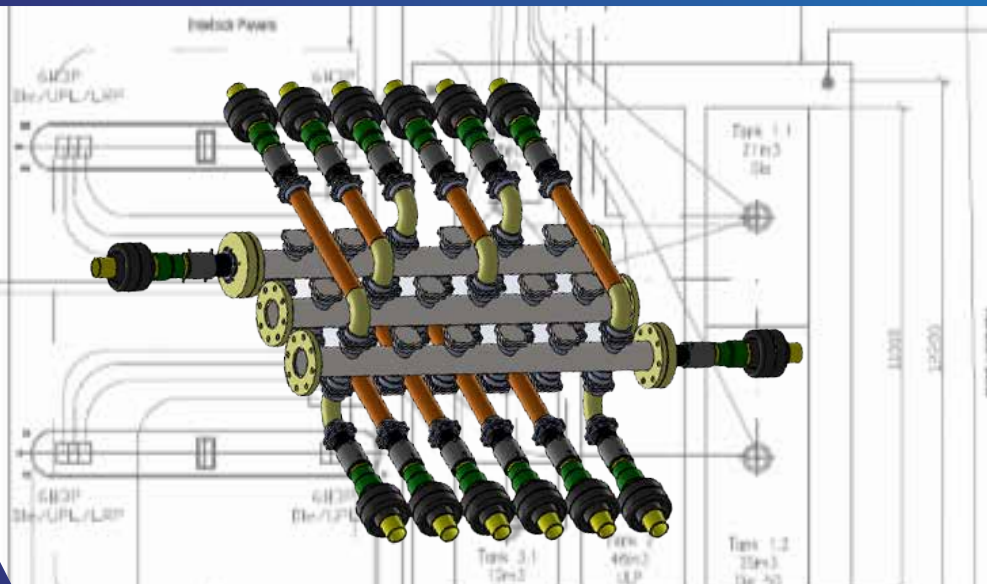


MBOX6 - 3 Products Modular Manifold for Service Stations



- Standard for max 6 tank compartments
- Extension to 9 or 12 tank compartments possible with second box
- Designed for single wall and double wall PE pipes of all brands
- Standardized concept
- Industrialized manufacturing
- Easy and fast to install
- Preassembled to customer specifications



The MBOX6 manifold increases your service station's profitability

Manifolds, installed between the storage tanks and the dispenser islands, offer the flexibility required in a modern service station. Functioning as a switchbox, they make changes in the product storage and allocation quick and easy, without expensive repiping work and greatly reduce the station downtime.

Based on the fuel sales trends, the marketing department can adapt the stored fuel capacities to improve the station's profitability and to respond better to the customer's needs.

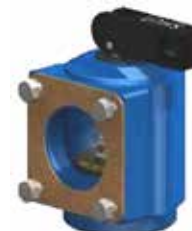
The MBOX6-3P manifold, designed for 3-fuel service stations, is the solution in territories where currently only two fuels are marketed and the introduction of a third fuel is expected in the future. Having the manifold in place and the station prepiped from day one makes the new fuel introduction a fast and uncomplicated task.



For operational and maintenance reasons, there are no valves inside the MBOX6 manifolds. Each dispenser is equipped with a multifunction under pump valve and a manual shut-off valve is installed on the tank manway lid to close the suction line when required.



UPV-AL-15-HF: Multifunctional under pump valve



ISV-SO-20: Suction pipe shut-off valve

Manifold



Technical specifications

Box

- 5 mm sheet steel, welded
- Standard equipped with Ø140 mm holes with 30 mm cuffs for:
 - 6 entry at low level for pipes from the tanks
 - 6 exits at high level for pipes to the dispenser islands
 - 3 right side passages to adjacent box or for pipes to the islands
 - 3 left side passages to adjacent box or for pipes to the islands
- 2 cable duct passages for cable ducts of 50, 63 or 90 mm
- Double sealing of all passing pipes in front & rear of the box
- Single sealing of all passing pipes in the side walls of the box
- Non-used holes are plugged inside and outside
- Low point sump to capture condensation
- Collector mounting frame for 3 x 3" collector
- Two support struts underneath for lifting with forklift
- Inside and outside polyurethane (Endoprene) coating



Box cover

- 5 mm sheet steel, welded
- Slant top shape for traffic load dispersion
- Round interface matching the SLC3600L round composite cover
- Inside and outside polyurethane coating
- Installed and sealed on the box after all pipe connections are made



Composite street cover

- MwayPro, 900 mm round composite cover SLC3600L, class C250 or SLD3600L, class D400
- With seal and lock
- GRP skirt SKI0036MAN allows burial depth adjustment (+/-250 mm)



Speed chassis

- Allows precise alignment of the manifold boxes
 - MSB7956 : Frame for 1 box
 - MSB13756 : Frame for 2 boxes; one box 6 tanks + one box 3 tanks
 - MSB15956 : Frame for 2 boxes; two box 6 tanks
- The chassis (height 280 mm) serves as concrete slab reinforcement once the boxes are installed

When ordering a preassembled manifold provide following service station details to the CGH customer service department via info@cghbelgium.com :

- Number of products (max 3)
- Number of storage tank compartments
- Stored product per tank compartment
- Number of islands and dispensers
- Single or double wall PE piping with pipe O.D.s
- Station drawing with required manifold location and piping layout

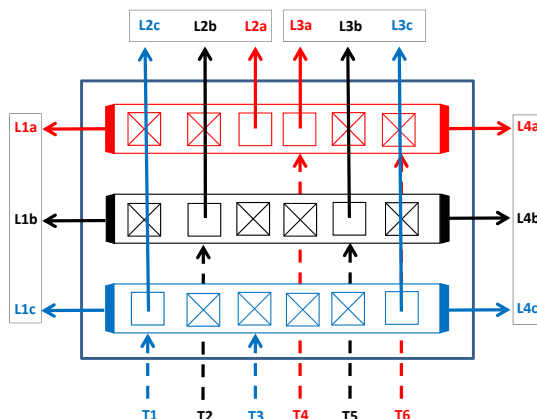
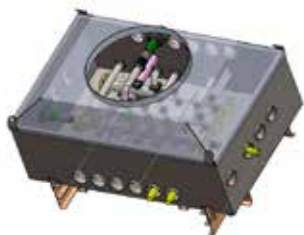
Manifold



Configurations and dimensions

MBOX6-3P6T12D

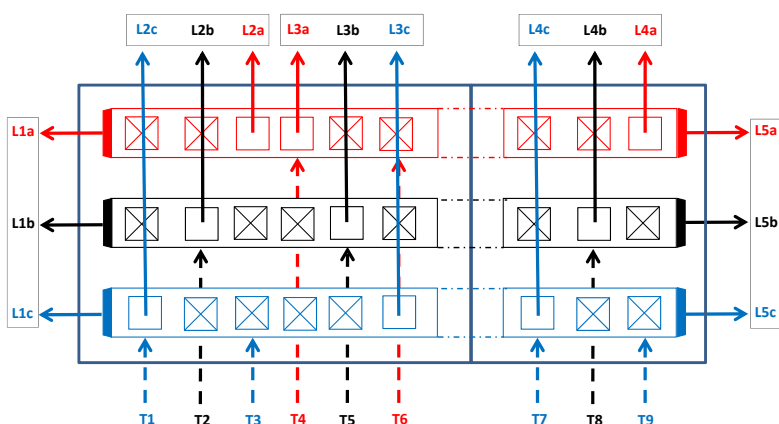
Maximum 6 tanks and 12 lines



Height: 1.310 mm (*1) / Foot print: 2.012 mm x 1.482 mm / Weight: 735 kg (fully equipped)

MBOX6-3P9T15D

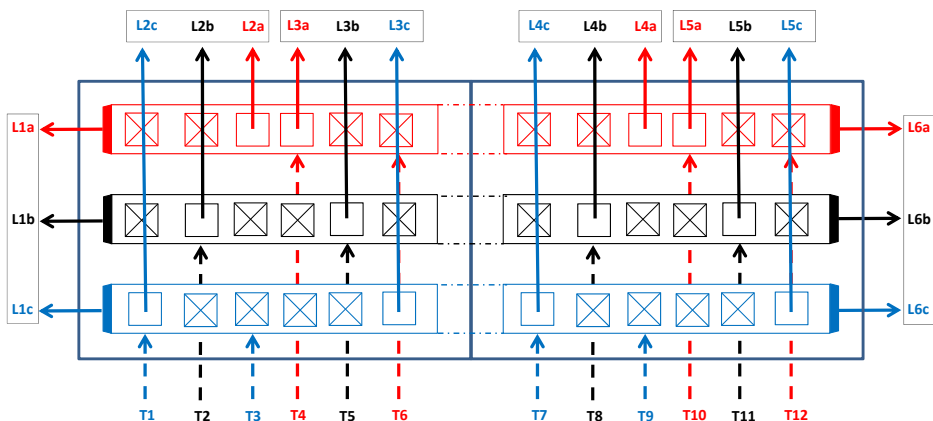
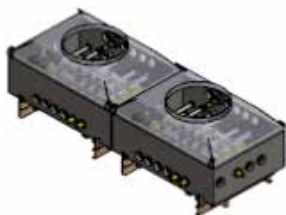
Maximum 9 tanks and 15 lines



Height: 1.310 mm (*1) / Foot print: 3.477 mm x 1.482 mm / Weight: 1382 kg (fully equipped)

MBOX6-3P12T18D

Maximum 12 tanks and 18 lines



Height: 1.310 mm (*1) / Foot print: 4.017 mm x 1.482 mm / Weight: 1.470 kg (fully equipped)

(*1) **Burial depth:** Composite cover height not included. Trimmable GRP skirt for +/- 250 mm adjustment.
Transport: One box + frame per pallet. Separate installation frame for 2-box manifolds.

Custom code: 73269098 **Origin:** EU.



CGH Belgium nv
 Rijksweg 10 C
 B- 2880 BORNEM
 Tel.: +32 (0)3 459 80 76
 E-mail: info@cghbelgium.com

www.cghbelgium.com

Modular 3G Manifold - EN - 20160404
 Non-contractual document