

# Risbridger

## Tanklid and dispenser components



- 2" suction fittings with shut-off test valve
- 2" vent fittings
- 4" Fill-Tee's with Overfill Protection
- Riser for automatic tank gauge cartridges
- Shear valves and under pump valves
- Pressure Vacuum vents and rain caps
- Vapour recovery connectors
- Anti syphon valves



# Risbridger Tanklid Components



## RIS-RISER

Riser for electric level cartridges  
Flange to flange height: 500 mm  
3" flange mount

## RIS-STOP-3GFF-240

Fill-Tee 4" with Overfill Protection Device  
4" Swivel-flange mount  
Flow rates up to 1025 l/min, gravity fill  
Automatic and fail-safe mechanical operation  
Aluminium drop tube 2500 mm  
Optional flexible connector  
Optional diffusor and air transfer valve



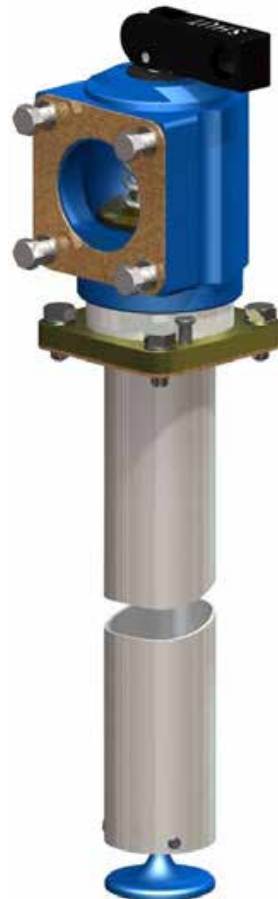
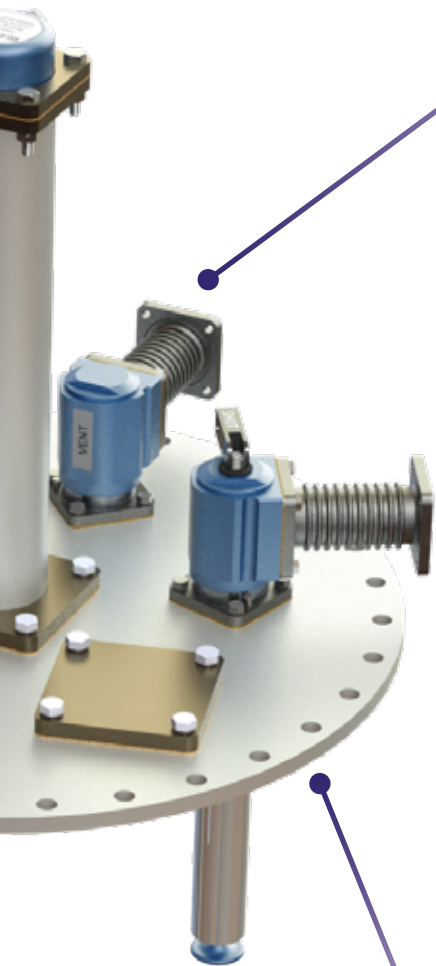
**ISV-VE-20F**

Vent line adapter with 2" square flange  
2" Swivel-flange mount



**ISV-SO-20F**

Suction line adapter with 2" square flange  
Shut-off valve for line testing  
2" Swivel-flange mount  
Supplied with suction deflector  
2" Drop tube optionally available: **SUT2000**



**LID72016**

Machined steel manlid,  $\varnothing$  720 mm, 16 mm thick  
4" and 2" ports,  
Optional blank or adapter plates  
Customer-specific configurations are possible

# Additional components



Offset fill-Tee with 4" flange  
4" Swivel-flange mount  
Topside access to the drop tube

Vapour tight dip for water on tanks with a Stage II vapour recovery system



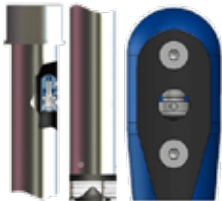
Flexible connector 2", 3" and 4" for connection of piping to the tanklid adapters

Adapter plates 4" to 2" or 3"  
Blind plates 2", 3" and 4"



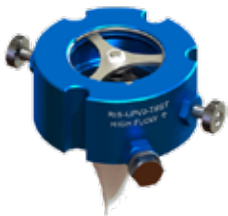
Drop tube diffuser, 3" and 4"  
Avoids kicking up dirt from the tank bottom and reduces vapour creation during filling

Vent shear valve



Air transfer valve in the drop tube. Air in the fill line escapes into the tank ullage at the start of the filling operation

AdBlue Shear valve



High-flow under-pump valve, 130 l/min  
Isolation valve for pipe leaktesting  
1/8" pressure gauge port  
Fits on both triangular and oval flanges  
Optional strainer

Vapour recovery connector for fill boxes



High-flow under-pump valve, 130 l/min  
Stainless steel version for AdBlue

Innovent Diesel and Petrol vents with labyrinth rain cap



Pressure Vacuum Vent  
Available for diesel and petrol  
Quick Release available

High flow anti syphon valve for aboveground storage tanks



CGH Belgium nv  
Rijksweg 10 C  
B-2880 BORNEM  
Tel.: +32 (0)3 459 80 76  
E-mail: info@cghbelgium.com

[www.cghbelgium.com](http://www.cghbelgium.com)

Risbridger General- EN - 20180409  
Non-contractual document