

# Composite covers for service stations



- Lightweight composite materials
- Corrosion resistant
- Permanent anti-slip surface
- Non-conductive
- Lockable with secondary restrain lip
- With or without central dip hole
- For driveways with slow moving cars and trucks (< 60 km/h)



# Composite manhole covers

## C250



Model	SLC3600(DC)	SLC4200(DC)
Clearance (mm)	Ø 900	Ø 1.060
Weight cover (kg)	31	40
Glass fiber skirt	SKI 0036	SKI 0042
Concrete slab (with anti-slip profile)	CONSLAB 36	CONSLAB 42
Dimensions concrete slab (mm)	1450 x 1450 x 200	1600 x 1600 x 200

C250 covers are provided with a gasket and can optionally be provided with a central dip hole (DC).



## D400



Model	SLD3600L	SLD4200L
Clearance (mm)	Ø 900	Ø 1.060
Weight cover (kg)	46	51

All D400 covers are provided with a stainless steel lock and a sealing gasket.

# For service stations



## Skirts SKI0036 and SKI0042

- Locks in the frame and glued with SIKAFLEX.
- 300mm height for SLC3600(DC) covers.
- 300mm and 600mm for SLC4200(DC) covers.



Cover lifting is done with the ergonomic SLH0080 handle.

The MwayPro covers are compatible with following **PE tank sump**:

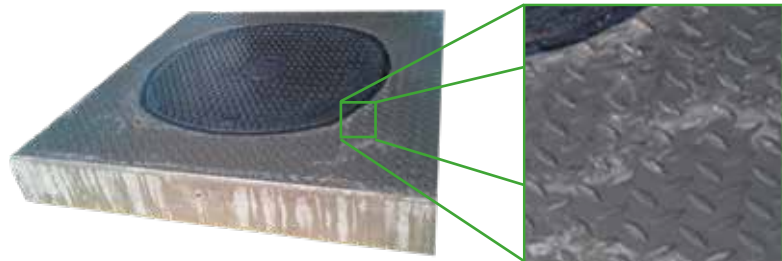
- SLC3600(DC) and SLD3600L : SM5533TT
- SLC4200(DC) and SLD4200L : SM5542(L)



## Options



A steel safety grid can be installed in the cover opening to prevent falling into the opening



MwayPro covers are available precast in a concrete slab with anti-slip profile for easy and perfect installation in driveways

*MwayPro Composite Covers*

**CGH**  
Belgium

# MwayPro unique characteristics

## Material

- Advanced fiberglass composite

## Lightweight

- 3 times lighter than steel covers
- 4 times lighter than concrete covers
- Single person removal, preventing physical injury

## Secure

- Cover material has no intrinsic value
- Lockable for fuel theft prevention
- Eliminates risks of injury to the public
- Self-extinguishing when fire source is removed
- Thermally and electrically non-conductive

## Anti-slip

- Significantly more grip compared to iron, steel and other composite covers. In wet as well as in dry surface conditions, the Skid Resistance Value is > 60.

## Durable

- Low wear characteristics
- Lockable, preventing theft and tampering
- Longer life expectancy than iron, steel and other composite covers
- 15 year warranty on thread pattern

## Low maintenance

- Self-cleaning watertight seal
- Easy, single person removal

## Corrosion resistant

- Sand and salt resistant
- 15 year warranty against corrosion



CGH Belgium nv  
Rijksweg 10 C  
B- 2880 BORNEM  
Tel.: +32 (0)3 459 80 76  
E-mail: info@cghbelgium.com

[www.cghbelgium.com](http://www.cghbelgium.com)

MwayPro General Overview- EN - 20180404  
Non-contractual document